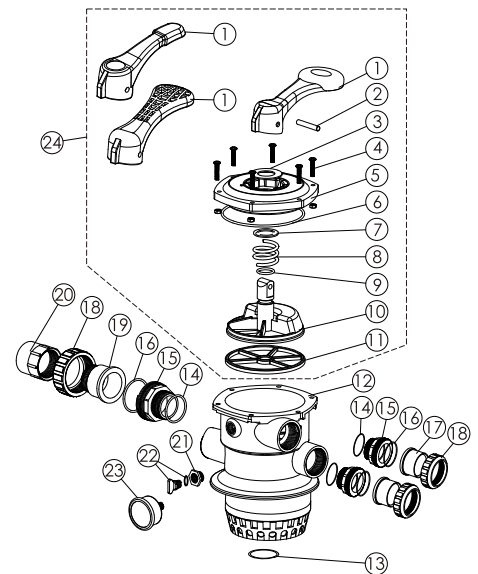


1.5" Top Mount Valve 1.5" 顶出缸头

Replacement Parts

零部件清单

项目	部件编号	英文描述	中文描述	数量
Item	Part No.	Description	Description	Qty
1	01013003	Handle (Big)	大手柄	1
1	01013002	Handle (Small)	小手柄	
1	01013001	Handle (Meshy)	网格手柄	
2	03018008	Pin for Handle	手柄固定销	1
3	01181001	Washer for Handle	大介子	1
4	89280107	M6 x 30 Screw with Nut for Standard Lid	M6×30 B头机丝连螺母	6
5	01010044	1.5" Top/Side Mount Valve Standard Lid	1.5寸缸头标准面盖	1
6	02011002	O-Ring for 1.5" Valve Lid	1.5寸面盖胶圈	1
7	01181002	Washer for Spring	小介子	1
8	03014001	Spring for 1.5" Top/Side Mount Valve	弹簧	1
9	02011022	O-Ring for Valve Rotor	分水器胶圈	2
10	01021001	1.5" Valve Rotor	1.5寸分水器	1
11	02311002	Spider Gasket	止水胶圈	1
12	E190147	1.5" Body with Diffuser (Black)	1.5寸缸头身连分水篮(黑色)	1
13	02011001	O-Ring for Diffuser	分水篮胶圈	1
14	02020013	O-Ring for 1.5"Connector	硅胶O形胶圈	3
15	01013015	1.5" Connector (Black)	1.5寸外牙头(黑色)	3
16	02011003	O-Ring for 1.5" Adaptor	丁晴胶O形胶圈	3
17	01171153	1.5" Union (A/E)	1.5寸公英制管接头	2
18	01013017	1.5" Union Nut (Black)	1.5"螺母(黑色)	3
19	01041002	1.5" Union with Sight Glass (Short)	透明管(短)	1
20	01172026	1.5" Union with Sight Glass Holder	刁套	1
21	89280120	Connector for Pressure Gauge/Stopper	压力表牙套连胶圈	1
22	89021307	Drain Plug with O-ring	扭制连胶圈	1
23	06011029	Oil Pressure Gauge with O-ring	油压表连胶圈	1
23	06021013	Plastic Pressure Gauge with O-ring	胶表连胶圈	
24	919305061	MPV01/MPV03 Upper part	MPV01/MPV03 缸头上部	1



NOTE:

Item 1-13, 21, 22 for Valve only (88280105).
Item 1-23 for Valve (88280150).

注意:

第1-13、21、22项为净缸头(88280105)。
第1-23项为连缸缸头(88280150)。

WARNING 警告

- ⚠️ TURN PUMP OFF BEFORE CHANGING VALVE POSITION.
- ⚠️ THIS FILTER OPERATES UNDER HIGH PRESSURE. WHEN ANY PART OF THE CIRCULATING SYSTEM (e.g., CLAMP, PUMP, FILTER, VALVES, ETC.) IS SERVICED, AIR CAN ENTER THE SYSTEM AND BECOME PRESSURIZED. PRESSURIZED AIR CAN CAUSE THE LID OR VALVE TO BE BLOWN OFF WHICH CAN RESULT IN SEVERE INJURY, DEATH, OR PROPERTY DAMAGE.
- ⚠️ TO PREVENT DAMAGE TO THE PUMP AND FOR PROPER OPERATION OF THE SYSTEM, CLEAN PUMP STRAINER AND SKIMMER BASKETS REGULARLY.

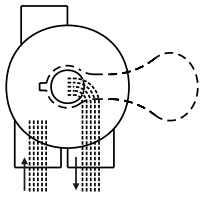
- * 转换阀门功能制时, 先停止水泵的运作。
- * 沙缸操作时会在高压下运作。当其中一部份打开(接合, 水泵, 沙缸, 阀门等等)需要修理, 空气便能进入系统内而改变大气压力, 使而气压导致外壳或阀门等爆炸, 造成受伤或环境破坏。
- * 防止水泵受损, 要定期清理水泵内的隔发器和池面撇渣器内的垃圾。

FUNCTIONS OF VALVE POSITIONS 阀门功能

Valve Position 阀门位置	Function 功能
FILTER 正常过滤	Normal Filtration 正常过滤
BACKWASH 倒冲洗	Cleaning Filter by reversing the flow 倒冲洗 (将过滤器内的污物排出)
RINSE 底管清洗	Used after backwash to flush dirt from valve 底管清洗
WASTE 无过滤排水	By-passes filter, used for vacuuming to waste or lowering water level 排水
RECIRCULATE 无过滤循环	By-passes filter for circulating water to pool 不经过滤器循环
CLOSED 关闭	Shuts off all flow to filter or pool 关 (将过滤器内之功能关上)

FILTER 正常过滤

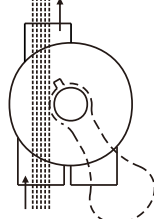
WASTE 排水口



IN FLOW OUT FLOW
进水口 出水口

WASTE 不经过滤直接排水

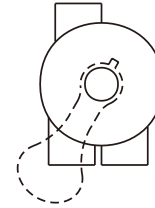
WASTE 排水口



IN FLOW OUT FLOW
进水口 出水口

CLOSED 关闭过滤功能

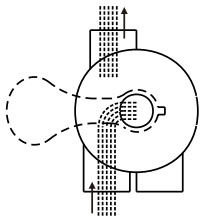
WASTE 排水口



IN FLOW OUT FLOW
进水口 出水口

BACKWASH 倒冲洗

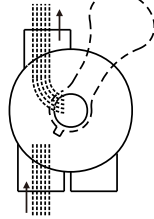
WASTE 排水口



IN FLOW OUT FLOW
进水口 出水口

RINSE 倒冲洗后冲洗管道

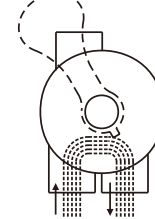
WASTE 排水口



IN FLOW OUT FLOW
进水口 出水口

RECIRCULATE 不经过滤器循环

WASTE 排水口



IN FLOW OUT FLOW
进水口 出水口

GENERAL

- 1) Pipe tap boss provided for optional influent pressure gauge.
- 2) SERVICING VALVE(Stop pump,close gate valve in suction&discharge before proceeding):
 - a) Set handle in filter position.
 - b) Remove cover screws.
 - c) Lift cover and key assembly out.

TO ASSEMBLE:

- 1) Place valve key so that wedge opening is at TOP port (handle in Filter psn.). Flat edge of cover screw lug should align with flat edge of body screw lug.
- 2) Position cover O'Ring.
- 3) Secure assembly to body with cover screws. Tighten cover screws evenly and alternately. Do not over-tighten.

综合简介:

- 1) 喉管上的水龙头能控制水流，而能随意影响到压力表。
- 2) 维修缸头(维修缸头前，请先关闭水泵及管道阀制)。
 - a) 手柄应设定在正常过滤位置。
 - b) 扭开沙缸头面盖上的螺丝。
 - c) 抬起手柄，将面盖连分水器取出。

装配简介:

- 1) 面盖胶圈放于面盖正确位置。
- 2) 握住手柄，将面盖连分水器放入缸头身，面盖上定位钉插入缸头身上小孔，手柄对着压力表孔（手柄在正常过滤位置），将螺丝孔及边对齐。
- 3) 对称上好螺丝，均匀用力，将螺丝拧紧，但不能拧得过紧。